



VT2022-TAIR22_T2119_Ethics of Artificial Intelligence

Respondents: 51
Answer Count: 19
Answer Frequency: 37.25%

The student perspective

The questions under this heading take the perspective of the student. You find questions regarding attendance rate, time spent on the course, degree of difficulty of the course, as well as the overall opinion of the course.

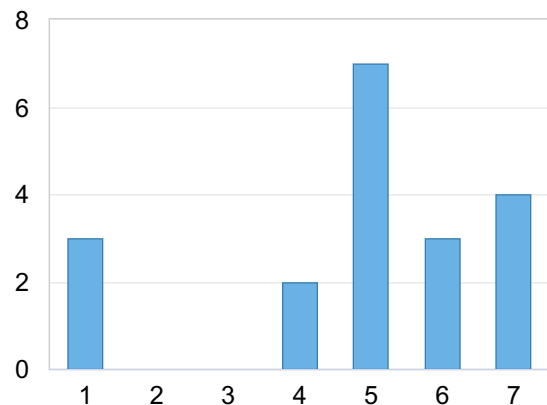
Regarding the last questions, we especially welcome you to write comments on positive aspects of the course as well as to indicate where you find room for improvement. Note: Make sure not to write in a way which might be offensive. (The Equal Treatment plan of Jönköping University contains more information.)

Your perception of the course as a whole.

1 = Not at all satisfied

7 = Very satisfied

Your perception of the course as a whole. 1 = Not at all satisfied 7 = Very satisfied	Number of responses
1	3 (15.8%)
2	0 (0.0%)
3	0 (0.0%)
4	2 (10.5%)
5	7 (36.8%)
6	3 (15.8%)
7	4 (21.1%)
Total	19 (100.0%)



● Your perception of the course as a wh...
1 = Not at all satisfied
7 = Very satisfied

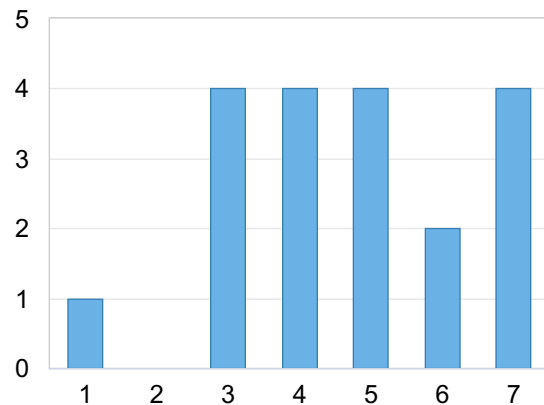


	Mean	Standard Deviation	Coefficient of Variation	Min	Lower Quartile	Median	Upper Quartile	Max
Your perception of the course as a whole. 1 = Not at all satisfied 7 = Very satisfied	4.8	2.0	40.3 %	1.0	4.5	5.0	6.0	7.0

I had sufficient prior knowledge to follow the various parts of the course.

1 = Do not agree at all
7 = Agree completely

I had sufficient prior knowledge to follow the various parts of the course. 1 = Do not agree at all 7 = Agree completely	Number of responses
1	1 (5.3%)
2	0 (0.0%)
3	4 (21.1%)
4	4 (21.1%)
5	4 (21.1%)
6	2 (10.5%)
7	4 (21.1%)
Total	19 (100.0%)



● I had sufficient prior knowledge to follow the various parts of the course.
1 = Do not agree at all
7 = Agree completely

	Mean	Standard Deviation	Coefficient of Variation	Min	Lower Quartile	Median	Upper Quartile	Max
I had sufficient prior knowledge to follow the various parts of the course. 1 = Do not agree at all 7 = Agree completely	4.7	1.7	36.3 %	1.0	3.5	5.0	6.0	7.0

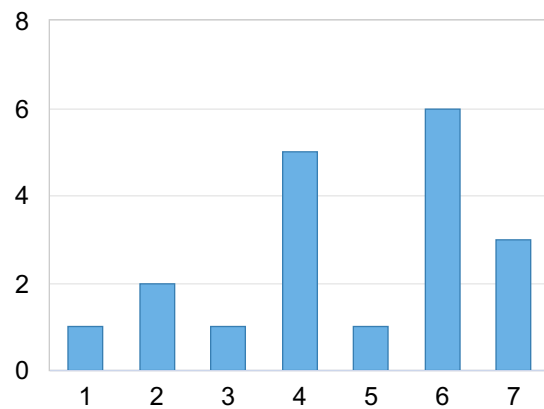


To what extent have you experienced that the course has a research connection.

1 = Not at all

7 = To large extent

To what extent have you experienced that the course has a research connection. 1 = Not at all 7 = To large extent	Number of responses
1	1 (5.3%)
2	2 (10.5%)
3	1 (5.3%)
4	5 (26.3%)
5	1 (5.3%)
6	6 (31.6%)
7	3 (15.8%)
Total	19 (100.0%)

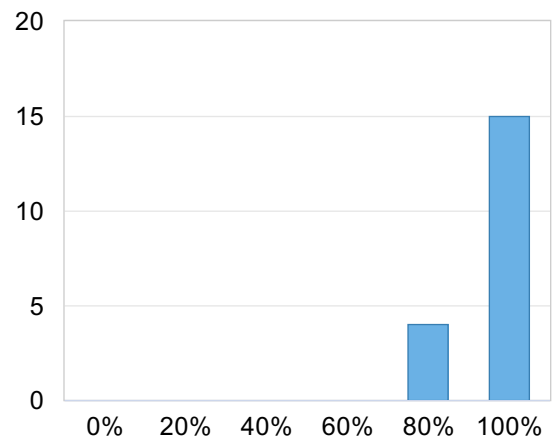


● To what extent have you experienced t...
1 = Not at all
7 = To large extent

	Mean	Standard Deviation	Coefficient of Variation	Min	Lower Quartile	Median	Upper Quartile	Max
To what extent have you experienced that the course has a research connection. 1 = Not at all 7 = To large extent	4.7	1.8	38.4 %	1.0	4.0	5.0	6.0	7.0

My course attendance rate. (Mark the nearest percentage)

My course attendance rate. (Mark the nearest percentage)	Number of responses
0%	0 (0.0%)
20%	0 (0.0%)
40%	0 (0.0%)
60%	0 (0.0%)
80%	4 (21.1%)
100%	15 (78.9%)
Total	19 (100.0%)



● My course attendance rate.
(Mark the nearest percentage)

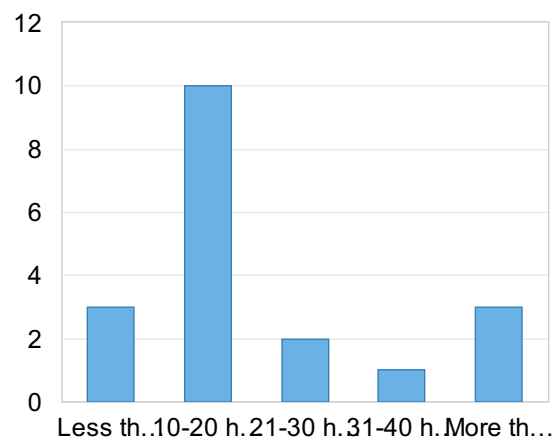
	Mean	Standard Deviation	Coefficient of Variation	Min	Lower Quartile	Median	Upper Quartile	Max
My course attendance rate. (Mark the nearest percentage)	95.8	8.4	8.7 %	80.0	100.0	100.0	100.0	100.0



Hours per week I spent on the course on average (classes and individual work).

Number of hours (mark the nearest number)

Hours per week I spent on the course on average (classes and individual work). Number of hours (mark the nearest number)	Number of responses
Less than 10 hours	3 (15.8%)
10-20 hours	10 (52.6%)
21-30 hours	2 (10.5%)
31-40 hours	1 (5.3%)
More than 40 hours	3 (15.8%)
Total	19 (100.0%)



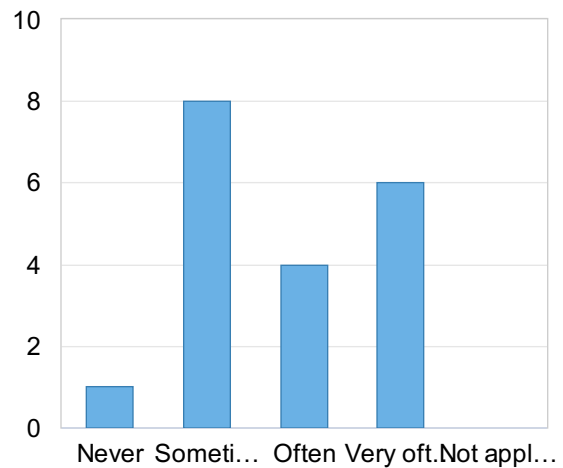
● Hours per week I spent on the course ...
Number of hours (mark the nearest num...

	Mean	Standard Deviation	Coefficient of Variation	Min	Lower Quartile	Median	Upper Quartile	Max
Hours per week I spent on the course on average (classes and individual work). Number of hours (mark the nearest number)	20.3	10.6	52.3 %	10.0	15.0	15.0	25.0	40.0



To what extent has your course challenged you to analyse ideas or concepts in greater depth?

To what extent has your course challenged you to analyse ideas or concepts in greater depth?	Number of responses
Never	1 (5.3%)
Sometimes	8 (42.1%)
Often	4 (21.1%)
Very often	6 (31.6%)
Not applicable	0 (0.0%)
Total	19 (100.0%)



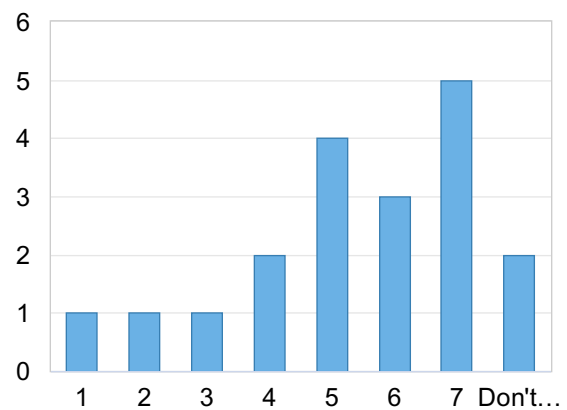
● To what extent has your course challe...

	Mean	Standard Deviation	Coefficient of Variation	Lower Quartile	Median	Upper Quartile	Max
To what extent has your course challenged you to analyse ideas or concepts in greater depth?	2.8	1.0	35.0 %	1.0	2.0	3.0	4.0

My opinion about the course material (e.g. course literature, scientific literature, recorded lectures, web quizzes, instructions for laborations).

1 = Not at all satisfied
7 = Very satisfied

My opinion about the course material (e.g. course literature, scientific literature, recorded lectures, web quizzes, instructions for laborations). 1 = Not at all satisfied 7 = Very satisfied	Number of responses
1	1 (5.3%)
2	1 (5.3%)
3	1 (5.3%)
4	2 (10.5%)
5	4 (21.1%)
6	3 (15.8%)
7	5 (26.3%)
Don't know	2 (10.5%)
Total	19 (100.0%)



● My opinion about the course material (...
1 = Not at all satisfied
7 = Very satisfied

	Mean	Standard Deviation	Coefficient of Variation	Lower Quartile	Median	Upper Quartile	Max
My opinion about the course material (e.g. course literature, scientific literature, recorded lectures, web quizzes, instructions for laborations). 1 = Not at all satisfied 7 = Very satisfied	5.1	1.8	35.8 %	1.0	4.0	5.0	7.0

As a person with dyslexia and autism the amount of reading that had to be done each week was very difficult to manage

Pedagogical content

The questions under this heading focus on the pedagogical content and the content related to the subject of the course.

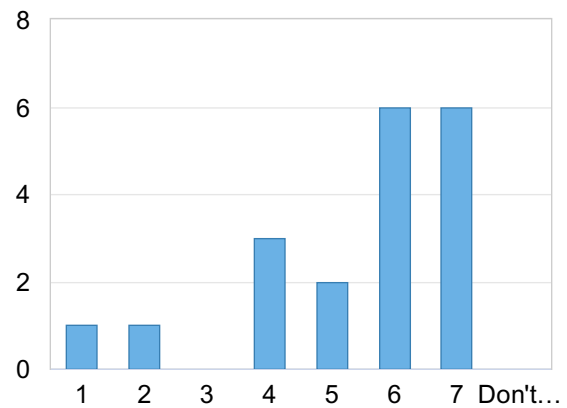
Please say how SATISFIED you are with the following in the course:



The quality of lectures/supervision.

1 = Not at all satisfied
7 = Very satisfied

The quality of lectures /supervision. 1 = Not at all satisfied 7 = Very satisfied	Number of responses
1	1 (5.3%)
2	1 (5.3%)
3	0 (0.0%)
4	3 (15.8%)
5	2 (10.5%)
6	6 (31.6%)
7	6 (31.6%)
Don't know	0 (0.0%)
Total	19 (100.0%)



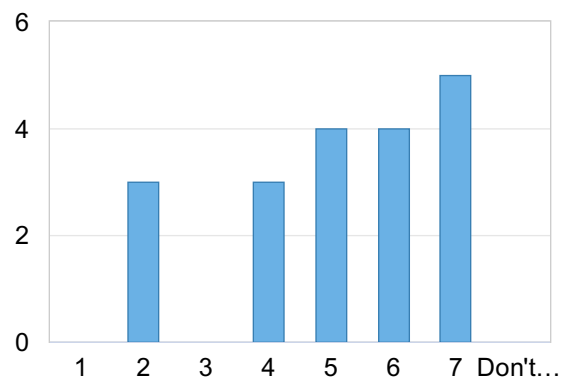
● The quality of lectures/supervision.
1 = Not at all satisfied
7 = Very satisfied

	Mean	Standard Deviation	Coefficient of Variation	Min	Lower Quartile	Median	Upper Quartile	Max
The quality of lectures /supervision. 1 = Not at all satisfied 7 = Very satisfied	5.4	1.7	32.1 %	1.0	4.5	6.0	7.0	7.0

The level of difficulty of the course and the relevance of the topic (the academic content of the course).

1 = Not at all satisfied
7 = Very satisfied

The level of difficulty of the course and the relevance of the topic (the academic content of the course). 1 = Not at all satisfied 7 = Very satisfied	Number of responses
1	0 (0.0%)
2	3 (15.8%)
3	0 (0.0%)
4	3 (15.8%)
5	4 (21.1%)
6	4 (21.1%)
7	5 (26.3%)
Don't know	0 (0.0%)
Total	19 (100.0%)



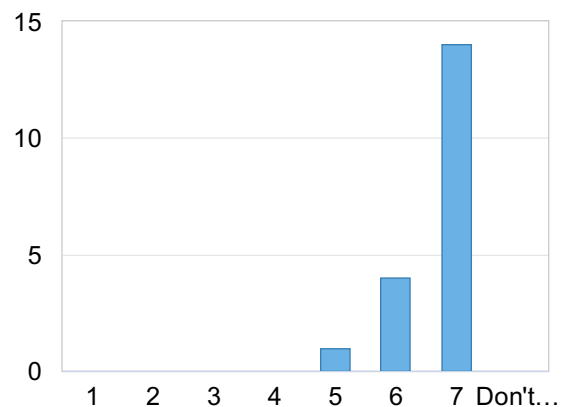
● The level of difficulty of the course and the relevance of the topic (the academic content of the course).
1 = Not at all satisfied
7 = Very satisfied

	Mean	Standard Deviation	Coefficient of Variation	Lower Min	Lower Quartile	Median	Upper Quartile	Max
The level of difficulty of the course and the relevance of the topic (the academic content of the course). 1 = Not at all satisfied 7 = Very satisfied	5.1	1.7	33.9 %	2.0	4.0	5.0	6.5	7.0

The usage of English during the course.

1 = Not at all satisfied
7 = Very satisfied

The usage of English during the course. 1 = Not at all satisfied 7 = Very satisfied	Number of responses
1	0 (0.0%)
2	0 (0.0%)
3	0 (0.0%)
4	0 (0.0%)
5	1 (5.3%)
6	4 (21.1%)
7	14 (73.7%)
Don't know	0 (0.0%)
Total	19 (100.0%)



● The usage of English during the cours...
1 = Not at all satisfied
7 = Very satisfied

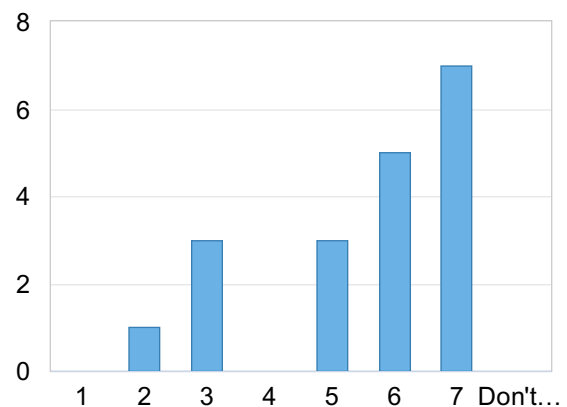
	Mean	Standard Deviation	Coefficient of Variation	Min	Lower Quartile	Median	Upper Quartile	Max
The usage of English during the course. 1 = Not at all satisfied 7 = Very satisfied	6.7	0.6	8.7 %	5.0	6.5	7.0	7.0	7.0

The communication between teachers and students.

1 = Not at all satisfied

7 = Very satisfied

The communication between teachers and students. 1 = Not at all satisfied 7 = Very satisfied	Number of responses
1	0 (0.0%)
2	1 (5.3%)
3	3 (15.8%)
4	0 (0.0%)
5	3 (15.8%)
6	5 (26.3%)
7	7 (36.8%)
Don't know	0 (0.0%)
Total	19 (100.0%)



● The communication between teachers...
1 = Not at all satisfied
7 = Very satisfied

	Mean	Standard Deviation	Coefficient of Variation	Min	Lower Quartile	Median	Upper Quartile	Max
The communication between teachers and students. 1 = Not at all satisfied 7 = Very satisfied	5.5	1.6	29.8 %	2.0	5.0	6.0	7.0	7.0

Planning and organisation of the course

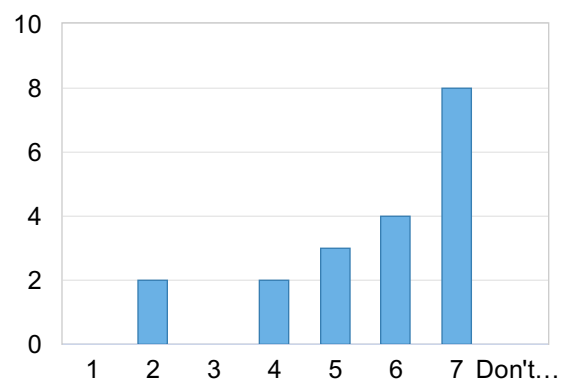
The questions under this heading focus on planning and organisation of the course, feedback on student work, information regarding marking/assessment criteria and feedback from the students.
Please say how SATISFIED you are with the following in the course:

Planning and organisation of the course (planning made and communicated in good time, clear information in the Study guide)

1 = Not at all satisfied

7 = Very satisfied

Planning and organisation of the course (planning made and communicated in good time, clear information in the Study guide) 1 = Not at all satisfied 7 = Very satisfied	Number of responses
1	0 (0.0%)
2	2 (10.5%)
3	0 (0.0%)
4	2 (10.5%)
5	3 (15.8%)
6	4 (21.1%)
7	8 (42.1%)
Don't know	0 (0.0%)
Total	19 (100.0%)



● Planning and organisation of the cour...
information in the Study guide)
1 = Not at all satisfied
7 = Very satisfied

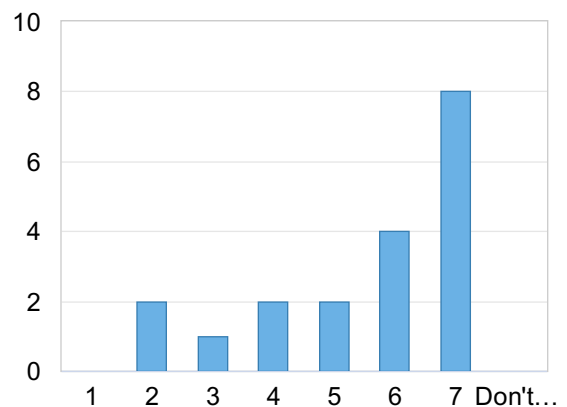
	Mean	Standard Deviation	Coefficient of Variation	Lower Min	Lower Quartile	Median	Upper Quartile	Max
Planning and organisation of the course (planning made and communicated in good time, clear information in the Study guide) 1 = Not at all satisfied 7 = Very satisfied	5.6	1.6	29.1 %	2.0	5.0	6.0	7.0	7.0

Explanation of marking/assessment criteria.

1 = Not at all satisfied

7 = Very satisfied

Explanation of marking /assessment criteria. 1 = Not at all satisfied 7 = Very satisfied	Number of responses
1	0 (0.0%)
2	2 (10.5%)
3	1 (5.3%)
4	2 (10.5%)
5	2 (10.5%)
6	4 (21.1%)
7	8 (42.1%)
Don't know	0 (0.0%)
Total	19 (100.0%)



● Explanation of marking/assessment cr...
1 = Not at all satisfied
7 = Very satisfied

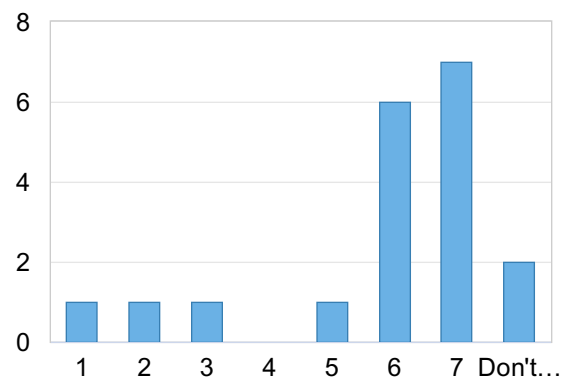
	Mean	Standard Deviation	Coefficient of Variation	Min	Lower Quartile	Median	Upper Quartile	Max
Explanation of marking /assessment criteria. 1 = Not at all satisfied 7 = Very satisfied	5.5	1.7	31.6 %	2.0	4.5	6.0	7.0	7.0

Possibility to achieve the intended learning outcomes (through lectures, laborations, seminars, projects, assignments, literature, other teaching aids).

1 = Not at all satisfied

7 = Very satisfied

Possibility to achieve the intended learning outcomes (through lectures, laborations, seminars, projects, assignments, literature, other teaching aids). 1 = Not at all satisfied 7 = Very satisfied	Number of responses
1	1 (5.3%)
2	1 (5.3%)
3	1 (5.3%)
4	0 (0.0%)
5	1 (5.3%)
6	6 (31.6%)
7	7 (36.8%)
Don't know	2 (10.5%)
Total	19 (100.0%)



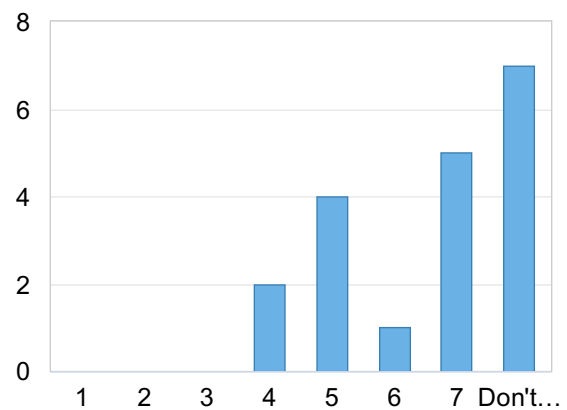
● Possibility to achieve the intended learning outcomes (through lectures, laborations, seminars, projects, assignments, literature, other teaching aids).
1 = Not at all satisfied
7 = Very satisfied

	Mean	Standard Deviation	Coefficient of Variation	Min	Lower Quartile	Median	Upper Quartile	Max
Possibility to achieve the intended learning outcomes (through lectures, laborations, seminars, projects, assignments, literature, other teaching aids). 1 = Not at all satisfied 7 = Very satisfied	5.6	1.9	33.1 %	1.0	6.0	6.0	7.0	7.0

Feedback on coursework/formal written submissions (i.e. feedback from the teacher on submitted student work)

1 = Not at all satisfied
7 = Very satisfied

Feedback on coursework/formal written submissions (i.e. feedback from the teacher on submitted student work). 1 = Not at all satisfied 7 = Very satisfied	Number of responses
1	0 (0.0%)
2	0 (0.0%)
3	0 (0.0%)
4	2 (10.5%)
5	4 (21.1%)
6	1 (5.3%)
7	5 (26.3%)
Don't know	7 (36.8%)
Total	19 (100.0%)



● Feedback on coursework/formal written submissions (i.e. feedback from the teacher on submitted student work).
1 = Not at all satisfied
7 = Very satisfied

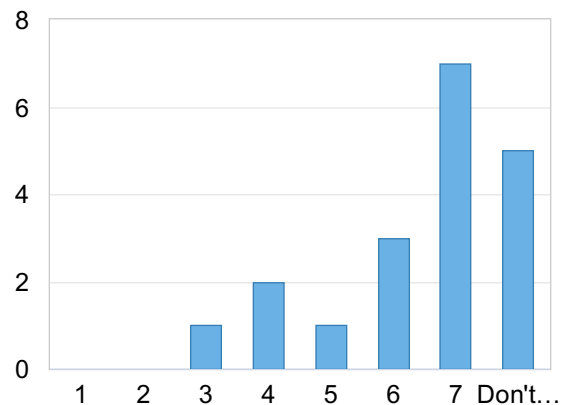
	Mean	Standard Deviation	Coefficient of Variation	Lower Quartile	Median	Upper Quartile	Max
Feedback on coursework/formal written submissions (i.e. feedback from the teacher on submitted student work). 1 = Not at all satisfied 7 = Very satisfied	5.8	1.2	21.1 %	4.0	5.5	7.0	7.0

Handling of student feedback during the course.

1 = Not at all satisfied

7 = Very satisfied

Handling of student feedback during the course. 1 = Not at all satisfied 7 = Very satisfied	Number of responses
1	0 (0.0%)
2	0 (0.0%)
3	1 (5.3%)
4	2 (10.5%)
5	1 (5.3%)
6	3 (15.8%)
7	7 (36.8%)
Don't know	5 (26.3%)
Total	19 (100.0%)



● Handling of student feedback during t...
1 = Not at all satisfied
7 = Very satisfied

	Mean	Standard Deviation	Coefficient of Variation	Min	Lower Quartile	Median	Upper Quartile	Max
Handling of student feedback during the course. 1 = Not at all satisfied 7 = Very satisfied	5.9	1.4	23.4 %	3.0	5.5	6.5	7.0	7.0



This worked really well in the course.

This worked really well in the course.

The lectures were high quality, preparation material was a good way to understand lectures more in-depth. The debate was a fun task to work on, could be split into two groups for presentation though.

This is a very meaningful course. I have learned very practical knowledge. Now many people only care about the code of artificial intelligence, but the ethics of artificial intelligence is actually very important. It's like having muscle strength alone is not enough, you also need the right direction of thinking. We need more classes like this.

Debates during lectures

The debate was really interesting to prepare and was really challenging.

Course preparation that got us into watching movies about AI and analyzing was a good way to study the upcoming lecture.

The course has room for improvement in the following areas.

The course has room for improvement in the following areas.

Mandatory presence (Absence from the lectures extra essay as "punishment" system)

Individual reports over group assignment

The fairness task description is unclear, could be improved due to that half the class is not in the AI master.

Smaller group seminars to create larger discussions. (could be used as grading instead of the fairness task)

We can use more lectures.

Mmh, there was mandatory lectures but people could leave after the the break. That's strange to me.

The written argumentative report felt weird to write because we are rarely on one side for every argument. I felt like I was lobbying for some company.

There was a lot of preparation material compared to how much time we had.

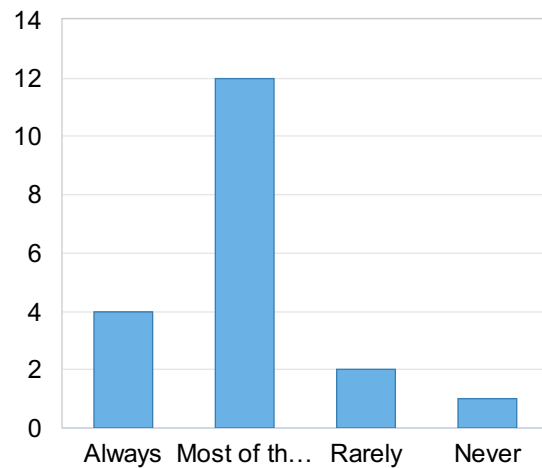
When the lectures are mandatory, it is a bit annoying to see that it does not have any consequence of arriving late and sometimes only for the last part of the lectures.

Having more in-depth technical lectures on specific methodologies to deal with biases.



As a student, I prepared before the seminars / classes by reading and engaging with the prepared material:

As a student, I prepared before the seminars / classes by reading and engaging with the prepared material:	Number of responses
Always	4 (21.1%)
Most of the time	12 (63.2%)
Rarely	2 (10.5%)
Never	1 (5.3%)
Total	19 (100.0%)



● As a student, I prepared before the se...

	Mean	Standard Deviation	Coefficient of Variation	Lower Quartile	Median	Upper Quartile	Max
As a student, I prepared before the seminars / classes by reading and engaging with the prepared material:	2.0	0.7	37.3 %	1.0	2.0	2.0	4.0